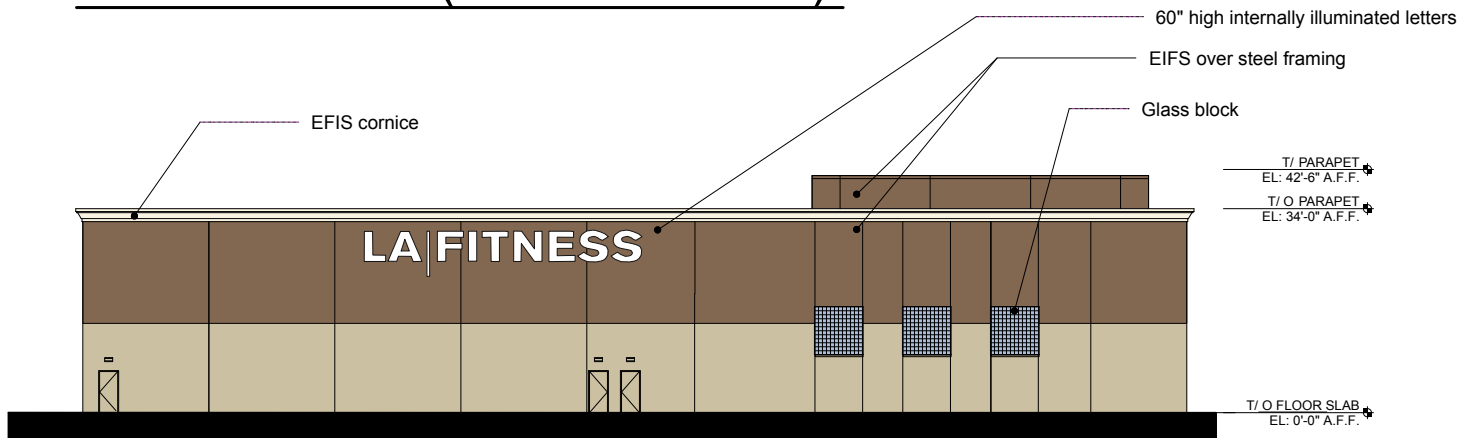


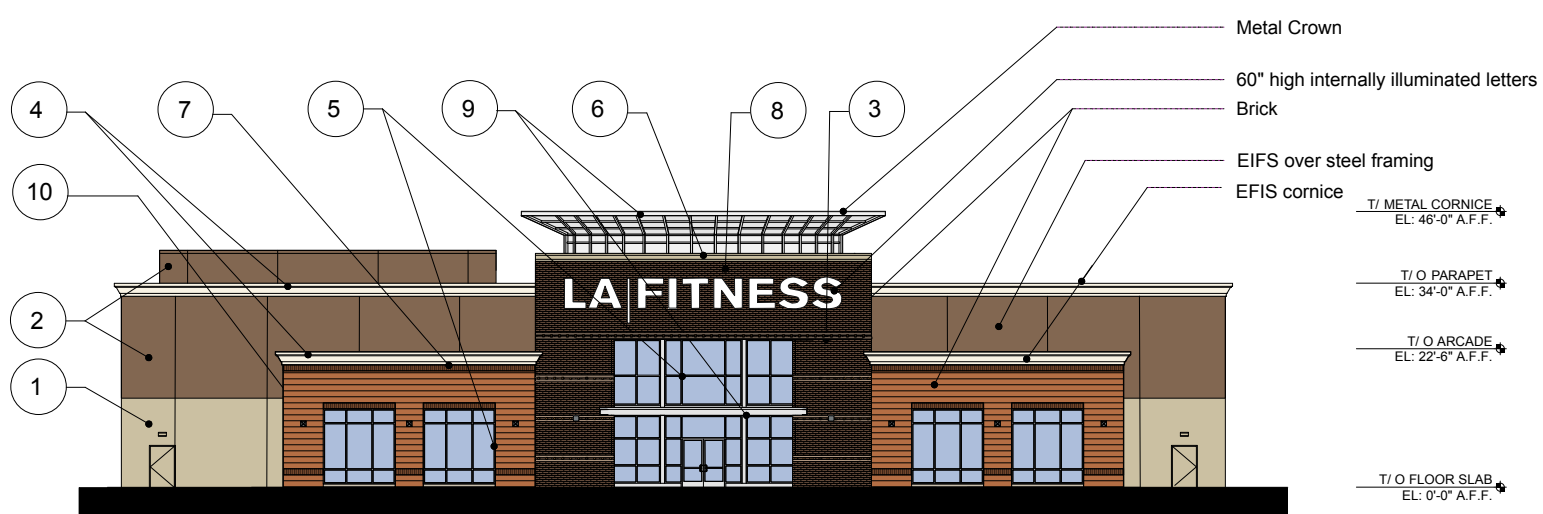
Side Elevation (West Elevation)



Rear Elevation (North Elevation)



Side Elevation (East Elevation)



Front Elevation (South Elevation)

Ground Floor - 30,220 S.F.
 Second Floor - 14,780 S.F.
TOTAL - 45,000 S.F.

NOTE: Architect of record to layout control and expansion joints in exterior cement plaster when used. The maximum spacing will be 12' x 12' or for a total of 144 sq.ft. For EIFS finish systems follow manufacturer's recommendations.

Color Legend

- | | | | | | | | | | |
|---|---|---|--|---|---|---|---|----|---|
| 1 | EIFS System - Match ICI Paints - #1768 - Highland Plains | 2 | EIFS System - Match ICI Paints - #1771 - Brown Study | 3 | Brick - Accent coursing at rotunda and lintels - Watsontown Brick - Color: M2 Houston | 4 | EIFS Cornice - Match ICI Paints - #1863 - Sawn White | 5 | Storefront & Entry Doors - Anodized finished aluminum at storefront, panels and entry doors |
| 6 | Pre-Finished Metal Coping - ICI Paints - #1769 - Creme Brulee | 7 | Brick - Field brick at arcades, accent at rotunda - Watsontown Brick - Color: Times Square | 8 | Brick - Field brick at rotunda - Watsontown Brick - Color: Scarsdale | 9 | Metal Entry Crown & Metal Canopy - Match ICI Paints - #2010 - Snowfield | 10 | Light Fixture - Dark oil-rubbed bronze - Kim Lighting fixture WFS74 |



Conceptual Elevations - Providence, RI