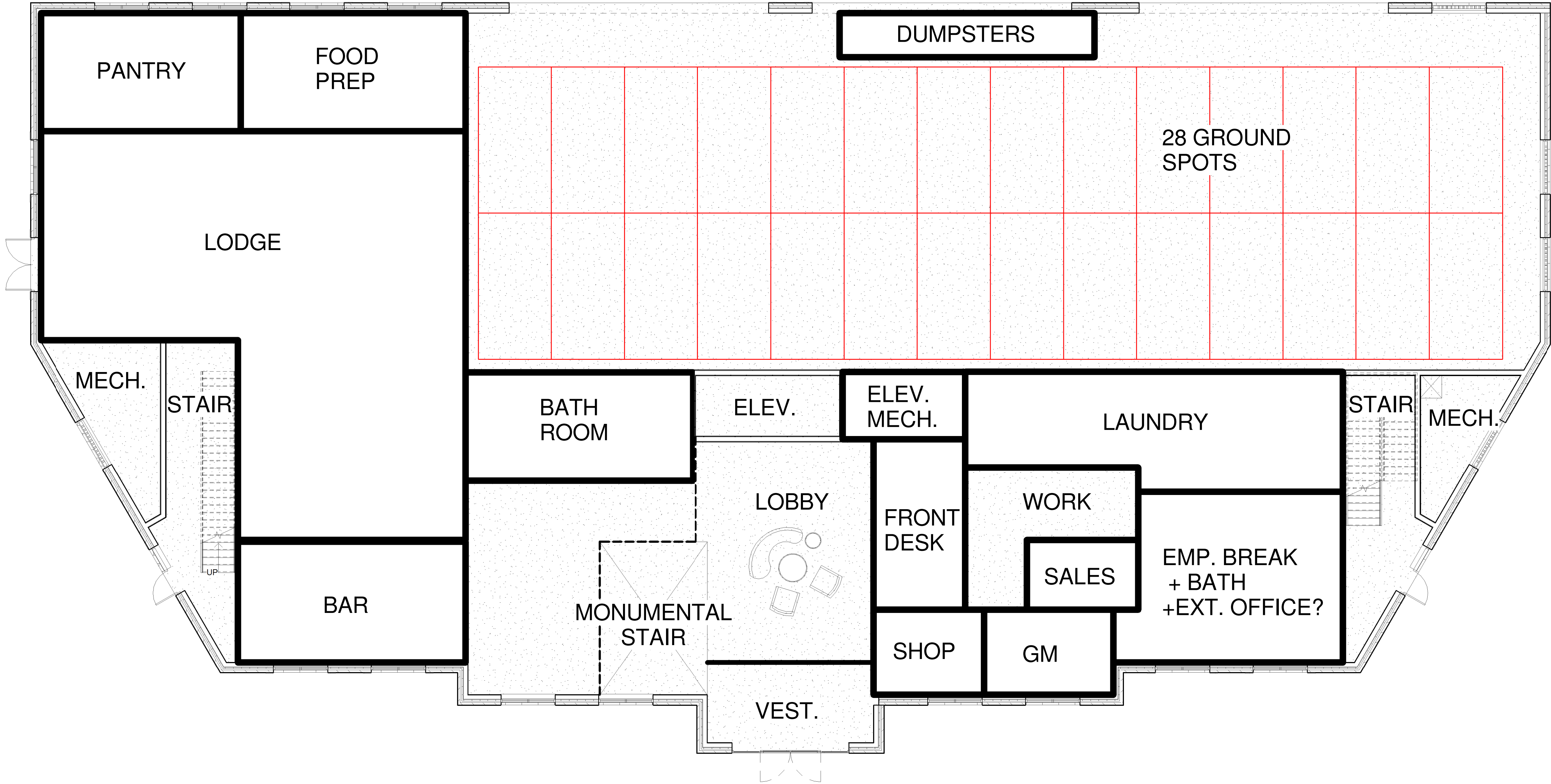



ARCHITECTURAL SITE PLAN

CONCEPTUAL
09 JUNE 2015





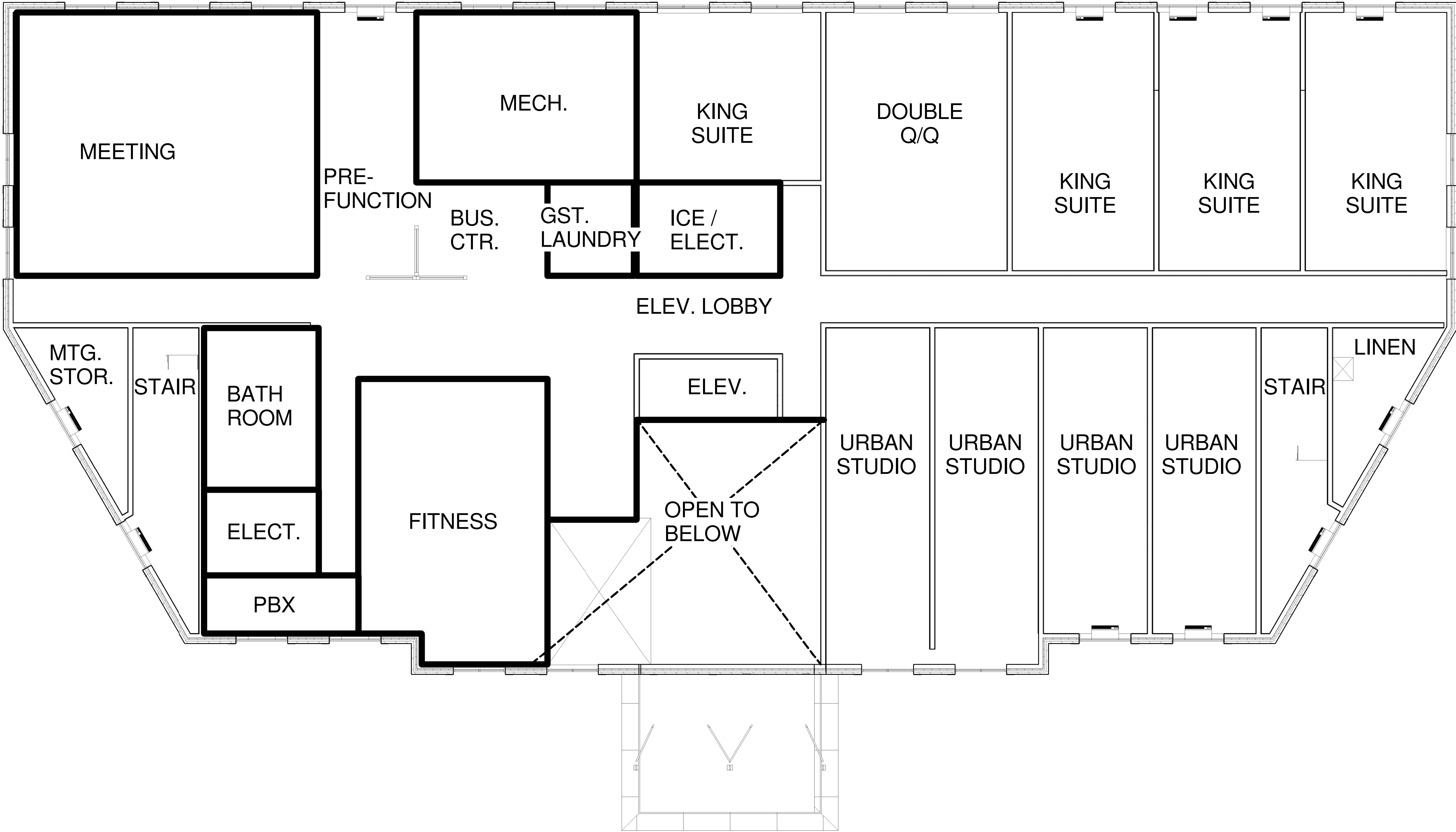
GUEST ROOM COUNT	
FIRST FLOOR	0
SECOND FLOOR	9
THIRD FLOOR	18
FOURTH FLOOR	18
FIFTH FLOOR	18
SIXTH FLOOR	18
SEVENTH FLOOR	18
EIGHT FLOOR	18
TOTAL	117

 A1 FIRST FLOOR
1/8" = 1'-0"


PRELIMINARY FIRST FLOOR PLAN

CONCEPTUAL
09 JUNE 2015





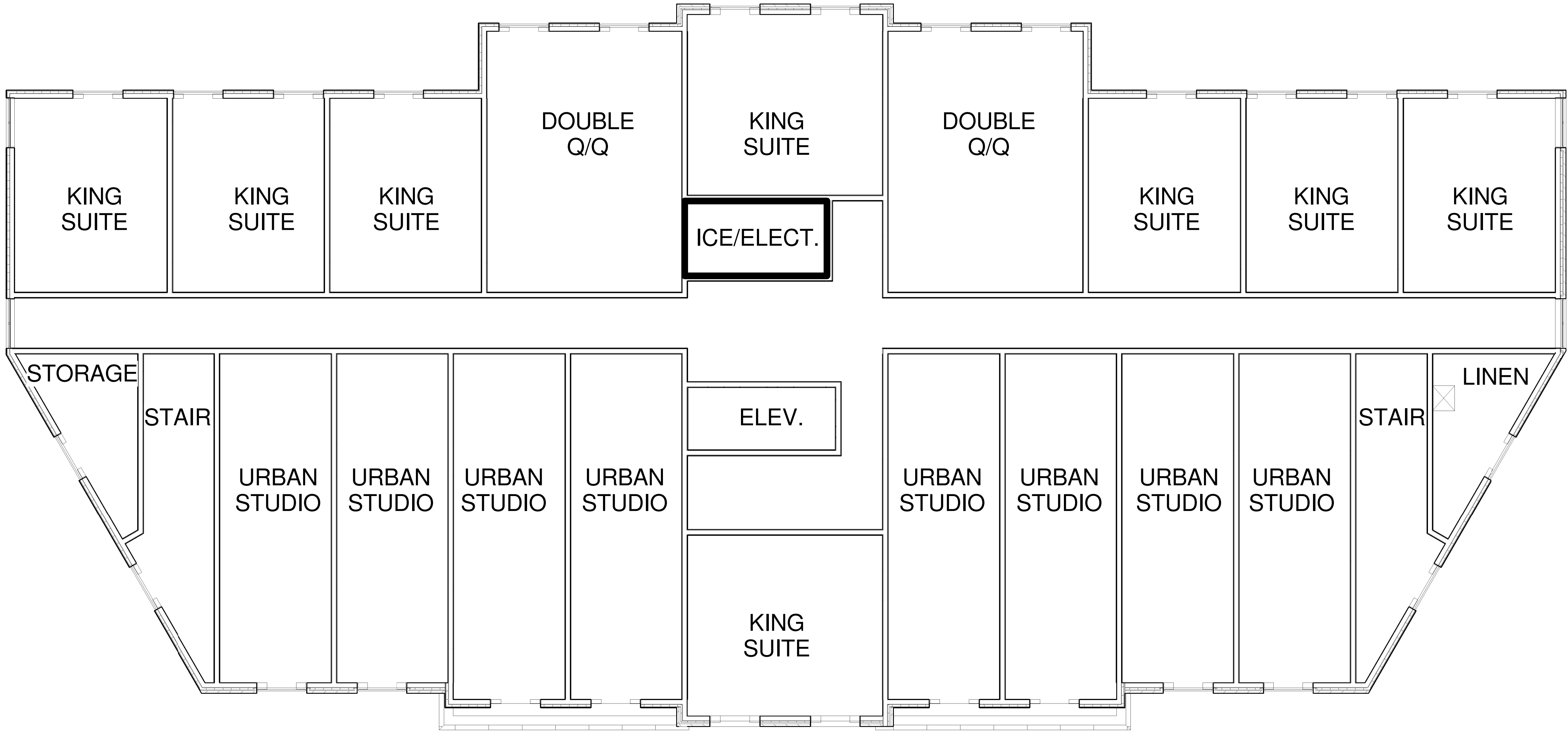
GUEST ROOM COUNT	
FIRST FLOOR	0
SECOND FLOOR	9
THIRD FLOOR	18
FOURTH FLOOR	18
FIFTH FLOOR	18
SIXTH FLOOR	18
SEVENTH FLOOR	18
EIGHT FLOOR	18
TOTAL	117

 A1 SECOND FLOOR
1/8" = 1'-0"

PRELIMINARY SECOND FLOOR PLAN

CONCEPTUAL
09 JUNE 2015





GUEST ROOM COUNT	
FIRST FLOOR	0
SECOND FLOOR	9
THIRD FLOOR	18
FOURTH FLOOR	18
FIFTH FLOOR	18
SIXTH FLOOR	18
SEVENTH FLOOR	18
EIGHT FLOOR	18
TOTAL	117

 A1 THIRD - EIGHTH FLOORS
1/8" = 1'-0"

PRELIMINARY TYPICAL UPPER FLOOR PLANS

CONCEPTUAL
09 JUNE 2015



FIRST BRISTOL CORPORATION

10 NORTH MAIN STREET
FALL RIVER MASSACHUSETTS 02722

PROVIDENCE HOMEWOOD SUITES

EXCHANGE STREET
PROVIDENCE RHODE ISLAND



B1 NORTH ELEVATION
1/16" = 1'-0"



B3 WEST ELEVATION
1/16" = 1'-0"



A1 SOUTH ELEVATION
1/16" = 1'-0"



A3 EAST ELEVATION
1/16" = 1'-0"

EXTERIOR ELEVATIONS

CONCEPTUAL
09 JUNE 2015



BMA
Architectural Group
Architects • Designers • Planners
Professional Corporation
12 Middle Street
Amherst, New Hampshire 03031
TEL 603 673 1991 FAX 603 672 1385
www.bmaworld.com